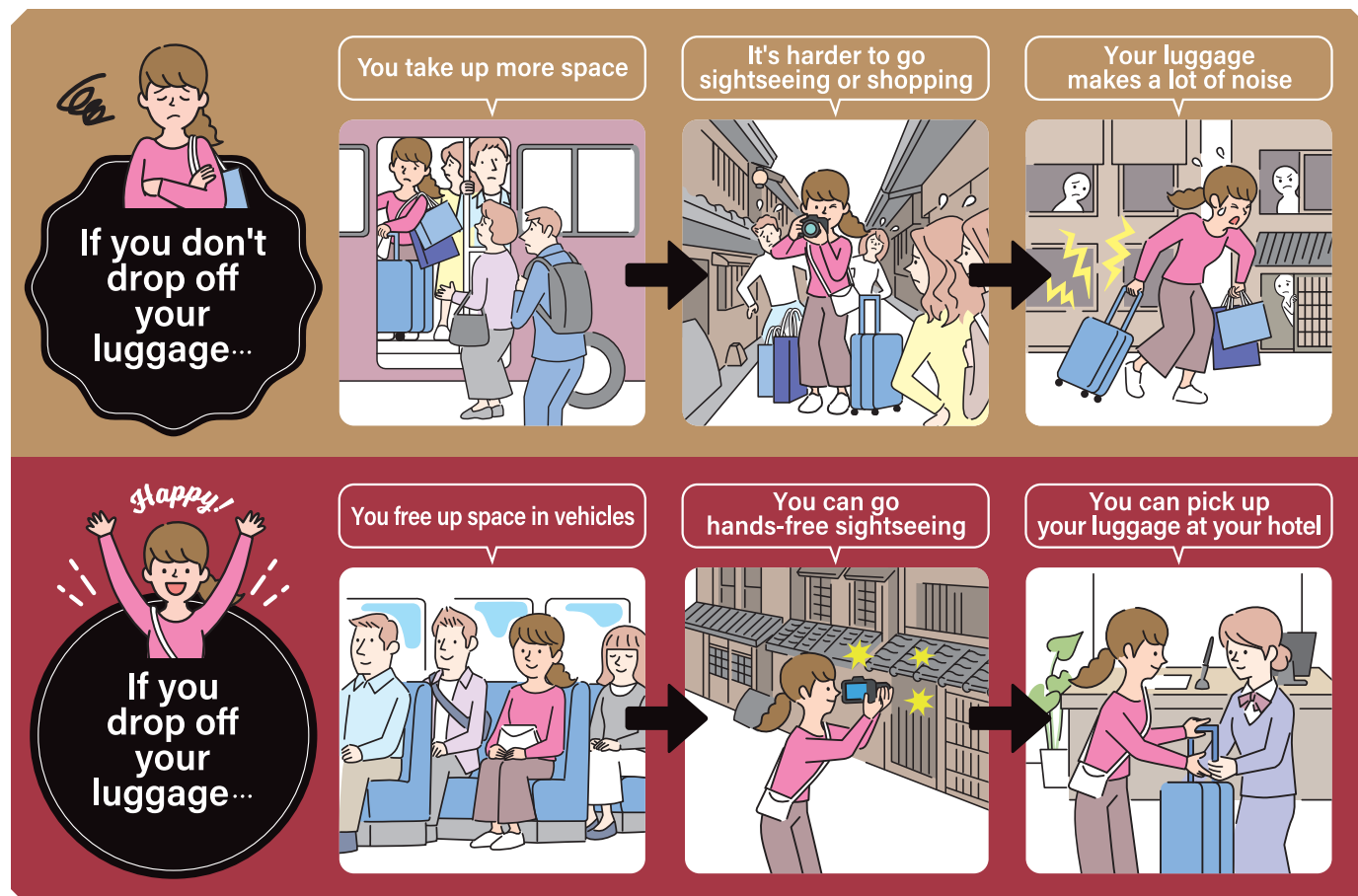


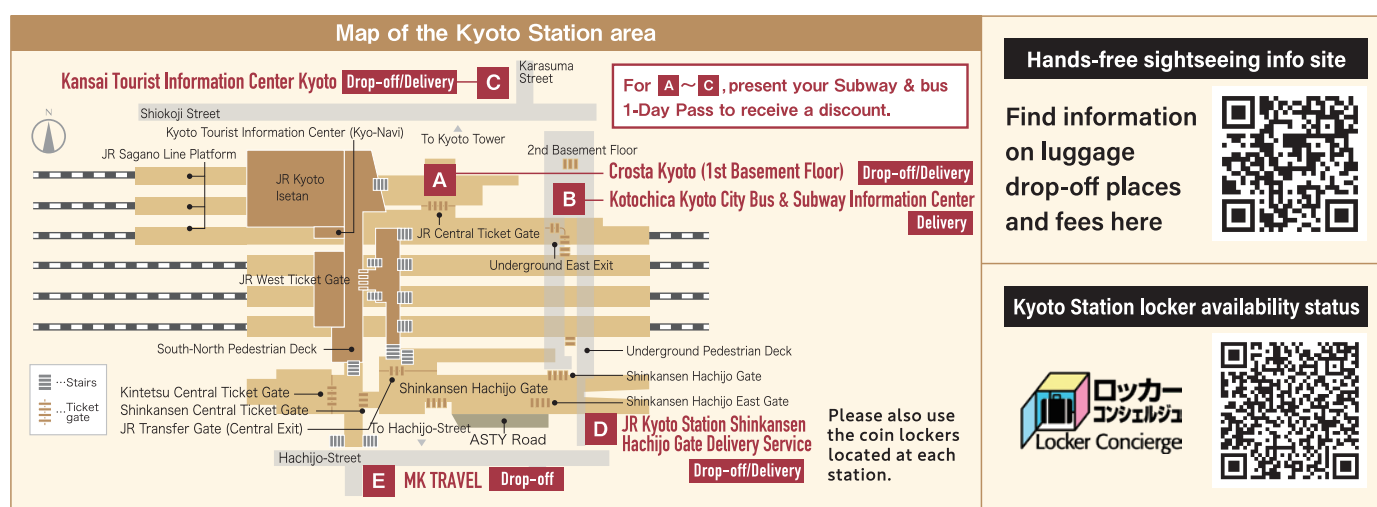
Enjoy **hands-free** sightseeing in **Kyoto**



Bringing suitcases or other large luggage onto buses or trains can cause crowding and even prevent local residents from using their own transportation systems. Go "hands-free sightseeing" whenever possible so everyone can get around comfortably!



※If you cannot check in large luggage, please consider using taxis or more personalized services.



※Some services provide hotel-to-hotel delivery, or delivery from Kyoto Station to Kansai International Airport. For more information, visit the website for each service.

※Please also use the temporary storage lockers found at each station in the city. Check locker availability at Kyoto Station with Locker Concierge. (Use the QR code on the right to go to the website.)

